
FD39C

WIRELESS FISH FINDER

FOR BAITBOAT USING



OPERATION GUIDE



Contents

Specification-----	2
Installation guide -----	3
Components list-----	3
Mounting the transducer-----	4
Assembling the transmitter-----	5
Assembling the receiver-----	6
Charge the battery of the receiver-----	7
Operational Instruction-----	8
Powering the display ON -----	8
What you see on screen-----	8
Accessing menu features-----	9
Remarks and Tips-----	14

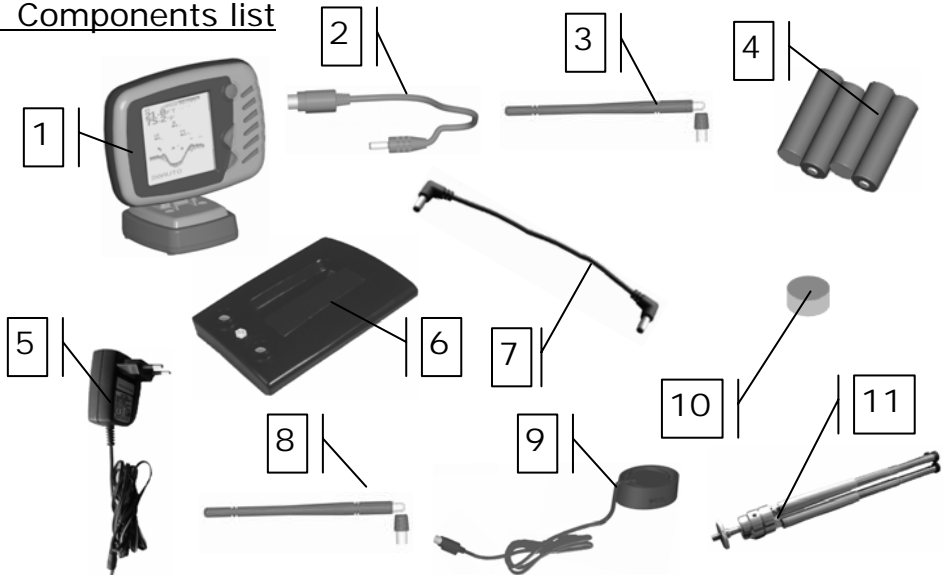
Specification:

Display :	FSTN LCD 128Vx64H
Backlighting :	White LED
Power Requirement of Receiver:	4-AA Rechargeable Batteries
Power Requirement of Transmitter:	DC12V
Measure Units:	Feet and meters
Sensor Frequency:	200KHz
Sensor Beam Angle:	45 degrees
Depth Range Max :	100ft (30.4M)
Depth Range Min :	2ft (0.6M)
Radio Frequency:	433MHz
Operational Range Max:	400M
Water Temperature Indicator:	Yes
Transmitter Low Battery Alarm:	Yes
Operational Temperature:	-4 to 158°F (-20—70°C)

Installation guide



1 Components list



-
- 1, Receiver
 - 2, Power cable
 - 3, Antenna of receiver
 - 4, 4 "a" rechargeable battery of receiver
 - 5, Charger of receiver
 - 6, Transmitter
 - 7, Power cable of transmitter
 - 8, Antenna of transmitter
 - 9, Sonar sensor(transducer)
 - 10, Magnet for mounting transducer
 - 11, Tripod(optional)

2 Mounting the transducer

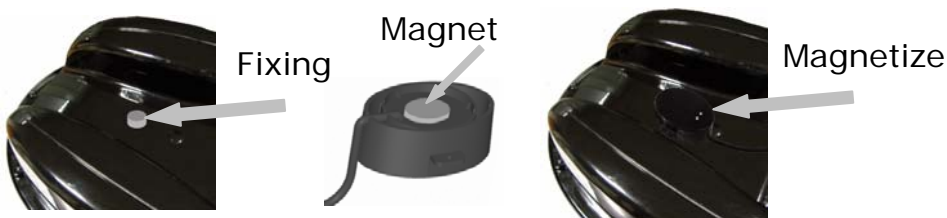
2.1 Method I: Remove the cover under the bait boat, put the transducer into the hole and keep the bottom of transducer to face outside (see illustration), fixing it by the screws.

Note: Tightening the screws.

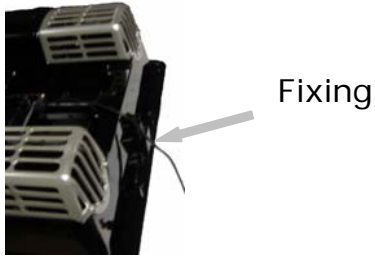


2.2 Method II: Stick the magnet on the bottom of boat by glue (see illustration), make the the magnet on the transducer magnetize with the one on the boat.

Note: Make sure the magnet is kept to be horizontal with bottom of boat when it is fixed.



2.3 Fixing the transducer signal cable on the tail of the bait boat(see illustration)

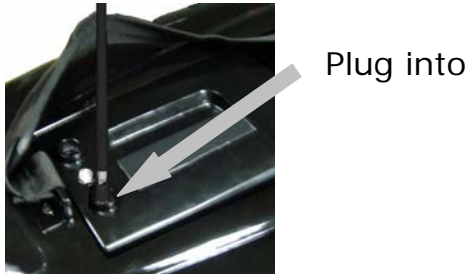


3 Assembling the transmitter

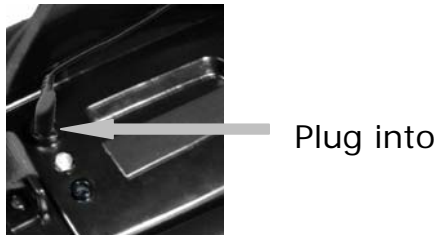
3.1 Assembling the transmitter on the top of the bait boat (see illustration).



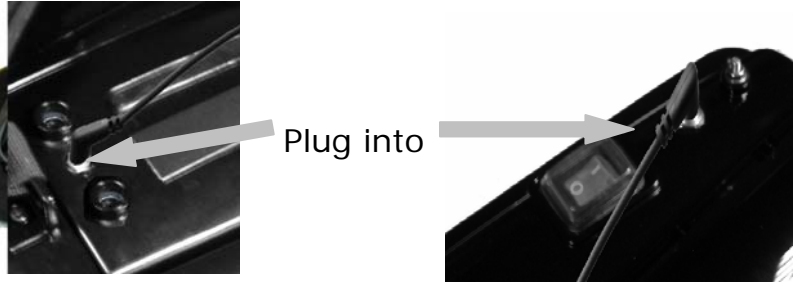
3.2 Assembling the antenna on the transmitter (see illustration).



3.3 Plug the transducer cable connector into the transmitter (see illustration)



3.4 Connect the power cable to the transmitter and socket of boat power.

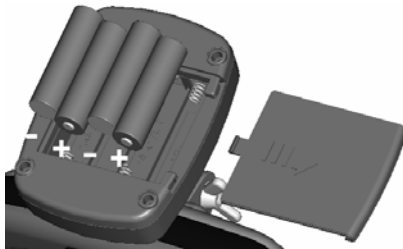


4 Assembling the receiver

4.1 Installing the batteries

When you first use the Fish Finder you will need to installing the batteries. Slide the Battery Door, and insert 4 "AA" batteries to the battery compartment.

Be certain to align the batteries as per the diagram within the battery compartment.



4.2 Assembling the antenna

Plug the antenna into the socket on the back of display tightly(see illustration)



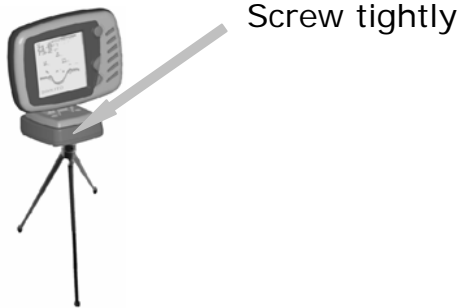
4.3 Connecting the Power Cable

Plug the power cable connector into the socket on the back of the display tightly and another side to the battery compartment.



4.4 Assembling the tripod (tripod is optional)

Screw the tripod in the screw thread socket on the bottom of battery compartment tightly (see illustration)



5 Charge the battery of receiver

Plug one side of charger's cable connector into the DC socket of receiver, another side into the AC power, the red indicator light and charging is started. The indicator turns green when power is full.



Warning!!! The chargers are different for transmitter and receiver. Correct using must be requested according to the instruction on the charger and this guide, otherwise the damage will be caused!

Operation Guide

1 POWERING ON AND OFF

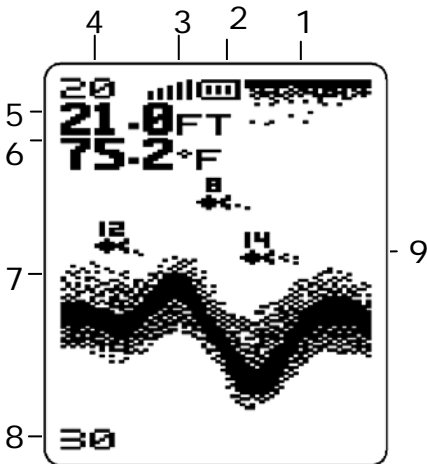
Press and release POWER-MENU to power the unit on.

Press and hold POWER-MENU until the unit shuts down to power off. When Unit powers on, the Start Up menu temporarily appears. From this menu, select either Start-Up for on-the-water use, or Simulation for learning to use the system with simulated sonar data.

The Start-Up menu disappears after several seconds and the Unit starts to work.



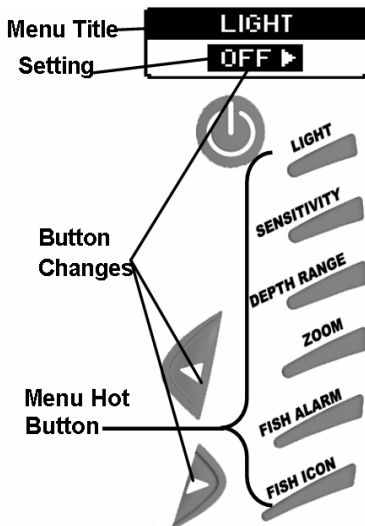
2 WHAT YOU SEE ON SCREEN



- 1 Water Surface Line**
- 2 Battery Strength Indicator**
- 3 Sensitivity Indicator**
- 4 Upper Zoom Range**
- 5 Water Depth**
- 6 Water Temperature**
- 7 Bottom Contour**
- 8 Lower Zoom Range**
- 9 Fish Icon with Fish Depth**

3 ACCESSING MENU FEATURES

A easy to use menu system accesses unit's adjustable funtion.To activate the menu system, press Menu Hot Button directly to access main menus or press POWER-MENU repeatedly to access all menus. When the menu is on the display, use the right and left keys to adjust the menu. Menus automatically are removed from the screen after several seconds.



3.1 Light



(Setting Saved in Memory)

When you press the LIGHT , the LIGHT menu temporarily appears. Select either OFF or ON to activate the backlight at the desired level.

NOTE: Continuous backlight operation significantly decreases battery life on Unit Portables.

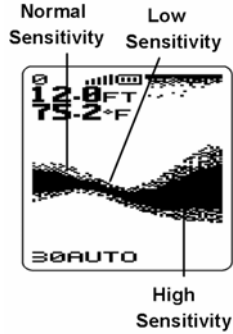
3.2 Sensitivity



(Setting Saved in Memory, 1 to 5)

When you press the SENSITIVITY , the SENSITIVITY menu temporarily appears. Select a higher level to show smaller sonar returns on-screen, or a lower level to remove clutter on the screen.

Adjusting Sensitivity also affects how sonar returns are identified as Fish Icon Symbols - more fish will be detected at a higher level setting, fewer at a lower level setting.



3.3 Depth Range



(Setting Saved in Memory)

When you press the DEP.RANGE , the DEPTH RANGE menu temporarily appears.

Select AUTO for the automatically setting Depth Range or manually select 8,15, 30, 60 or 120 ft. This locks the depth range to a specific setting.

NOTE: In manual operation, if the depth is greater than the depth range setting, the bottom will not be visible on-screen. Select AUTO to return to automatic operation.

3.4 Zoom



(Setting Saved in Memory)

When you press the ZOOM , the ZOOM menu temporarily appears. Select ON to magnify the area around the bottom thus revealing fish and structure close to the bottom that may not be visible in typical operation.

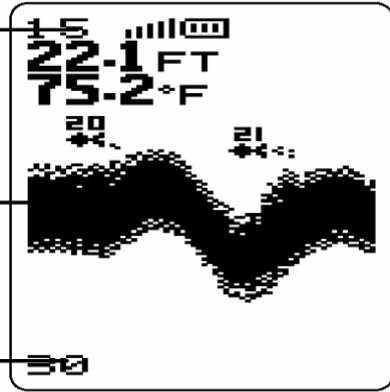
In Zoom, the Unit continually changes the upper and lower Depth Range to keep area just above and below the bottom on the display.

Select OFF to return to normal operation.

Upper Zoom Range

Magnified Bottom
with More Detail

Lower Zoom Range



3.5 Fish Alarm



(Setting Saved in Memory, Defaults to OFF)

When you press the FISH ALARM , the FISH ALARM menu temporarily appears. Select OFF for no fish alarm, or select the ON to set the fish alarm and activate it.


3.6 Fish Icon



Fish Icon

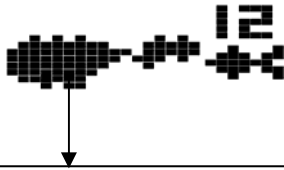


(Setting Saved in Memory)

When you press the FISH ICON , the FISH ICON menu temporarily appears. Select either OFF to view "raw" sonar returns, or  to take advantage of Unit's ability to identify sonar returns that are determined to be a fish.

The sonar's microcomputer is sophisticated, but it can be fooled. It can't distinguish between fish and other suspended objects such as trotlines, turtles, submerged floats, air bubbles, etc.

You may see fish symbols on the screen when actually, there are no fish. The reverse is also true.



For example, when this kind of symbols/dots come out, it is possible that is fish, but it is also possible that is other suspended objects.

3.7 Depth Alarm



(Setting Saved in Memory)

Press POWER-MENU until the DEPTH ALARM menu appears.

Select OFF for no Depth Alarm;

select a number from 3-99' to set the alarm depth and activate it.

Audible alarm will sound when the depth is equal to or less than the setting number.

3.8 Chart Speed



(Setting Saved in Memory, 1 to 4)

Press POWER-MENU until the CHART SPEED menu appears. Select a setting from 1-4 to increase or decrease the chart speed, where 1 is the slowest and 4 is the fastest chart speed.

3.9 Depth Unit



(Setting Saved in Memory)

Press POWER-MENU until the DEPTH UNIT menu appears. Select either FT or M to set the unit of depth.

3.10 Temperature Unit



(Setting Saved in Memory)

Press POWER-MENU until the TEMP- UNIT menu appears. Select either °C or °F to set the unit of temperature.

3.11 Low Battery Alarm

The wireless sonar sensor has the function which can detect the transmitter's power voltage capacity and alarm, when the sensor's power voltage is lower than 8V, the receiver will alarm with long continuous sound of "Bi.....".

Remarks and Tips

We would like to offer you the comments for ultrasonic based fishfinder display temperament as follows:

- 1. Fish finder is to find fish group under water under Ultrasonic reflections of scanning.**
- 2. It should be able to detect out the fish group in points definition, such as 2 points(thin lighted points) on display for small group, 3 - 5 points(mid lighted points) for mid group of fishes, over 5 points(thick lighted points) as for many fishes in pointed shapes!**
- 3. This fish finder device is not a CAMERA or video recorder, which has to capture every and each single fish shape and numbers under water such as camera effect.**

4. So if the fish finder can find and display the ultrasonic reflection based pointed results on the LCD display of fishfinder then it is targeted results.

5. but of course, if it can not detect out any fish under water, but if there are fishes under water, then it is not qualified unit.

6,Make sure the transducer was dipped into the water before operating.

7,Make sure all plugs was connected tightly before using.

8,Continuous backlight operation significantly decreases battery life.

9, Never use a blunt to strike the sonar sensor as this may cause damage to the sensitive internal electronics.

10, Never use the same two FD39 in the same area as this may cause the product can not work properly due to the ultrasonic and radio frequency interference.

11, Remove the batteries from the fish finder to prevent battery leakage and corrosion.

12, As the depth range is from 0.6m-30.4m, the fish finder would not work properly if the water is too deep or shallow.

13,The too much weed in the water may cause the incorrect reflect.

Note: Changes maybe made to the information in this operation guide without obligation to notify any person of such revisions or changes.

